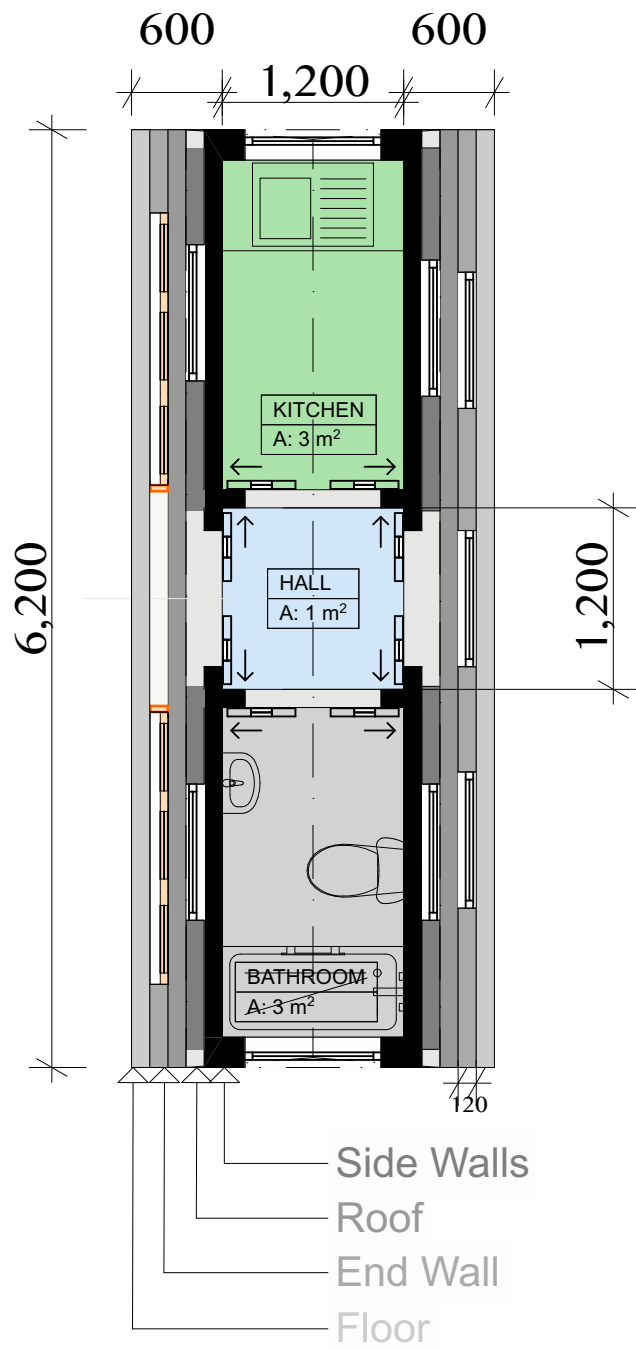


Floor Plan	Folded
00	1:50



Floor Plan	Folded Out To Extent
00	1:50



Drawn by: Dominic Whittaker
Read by: Vic Cooper

Dated: 31.05.22
Revision: P03

TIMBERSPECS UK.LTD

The Origami
Folding Timber Home

Originator project ref
00005
Scale(s)

Paper size
A3

Purpose of Issue
Design Development

Revision description
Preliminary

Floor Plans

North



project originator volume level type role number

OTC-DJG-ZZ-00-DR-A-2002

Native model: Vicos Origami Log Cabin_P03.ph

revision

P03

Notes:

- 2.4m max width on lorry
- 6.2m max lenth to allow two on lorry
- 2.2m tall (3.2m apex)
- 300mm roof overhang

This document is produced by Dominic Whittaker.

If in doubt ASK. Drawing measurements shall not be obtained by scaling. Verify all dimensions prior to construction.

Immediately report any discrepancies on this document to the Originator. This document shall be read in conjunction with associated models, specifications and related consultants' documents.